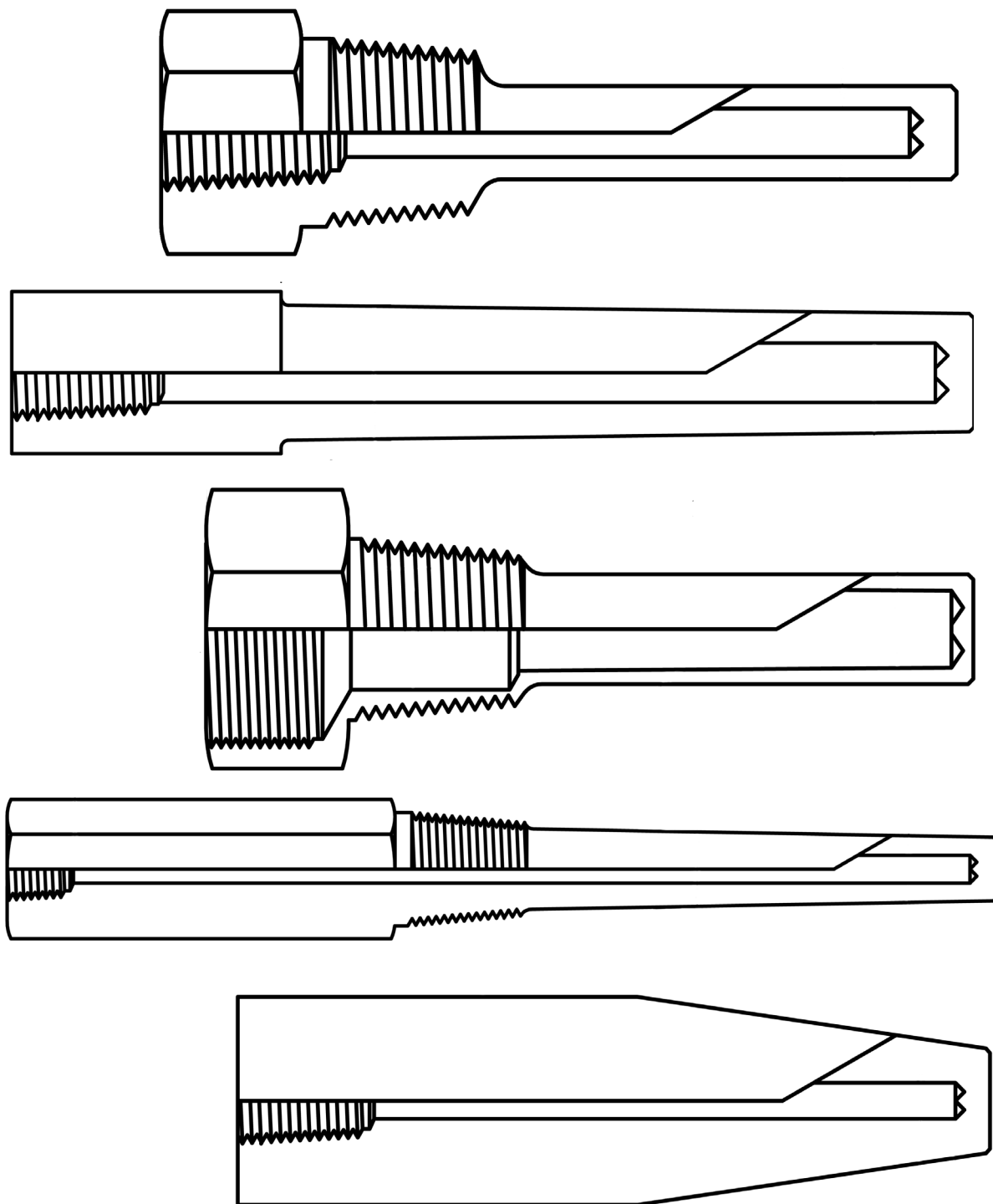
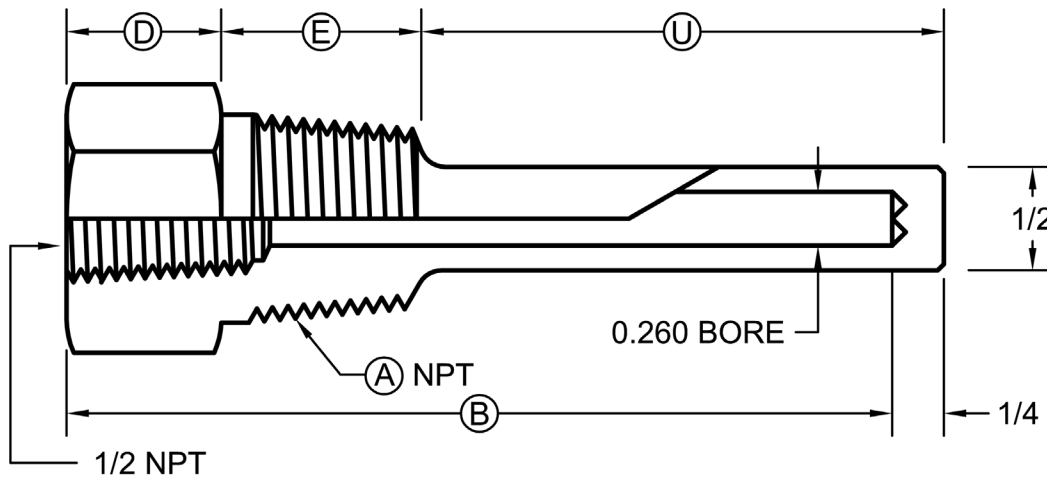


INDUSTRIAL THERMOWELLS



Standard Threaded, Straight Shank - 1/4" Bore	3
Standard Threaded, Straight Shank - 3/8" Bore	4
Standard Threaded, Stepped Shank - 1/4" Bore	5
Standard Threaded, Taper Shank - 1/4" Bore	6
Standard Threaded, Taper Shank - 3/8" Bore	7
Lagging Extension Threaded, Straight Shank - 1/4" Bore	8
Lagging Extension Threaded, Straight Shank - 3/8" Bore	9
Lagging Extension Threaded, Stepped Shank - 1/4" Bore	10
Lagging Extension Threaded, Taper Shank - 1/4" Bore	11
Lagging Extension Threaded, Taper Shank - 3/8" Bore	12
Socket Weld, Stepped Shank - 1/4" Bore	13
Socket Weld, Straight Shank - 3/8" Bore	14
Socket Weld, Taper Shank - 1/4" Bore	15
Socket Weld, Taper Shank - 3/8" Bore	16
Lagging Extension Socket Weld, Stepped Shank - 1/4" Bore	17
Lagging Extension Socket Weld, Straight Shank - 3/8" Bore	18
Lagging Extension Socket Weld, Taper Shank - 1/4" Bore	19
Lagging Extension Socket Weld, Taper Shank - 3/8" Bore	20
Weld-In, 1/4" Bore	21
Lagging Extension Weld-In, 1/4" Bore.	22
Weld-In, 3/8" Bore	23
Lagging Extension Weld-In, 3/8" Bore	24
Thermowells for Industrial Thermometers	25-27

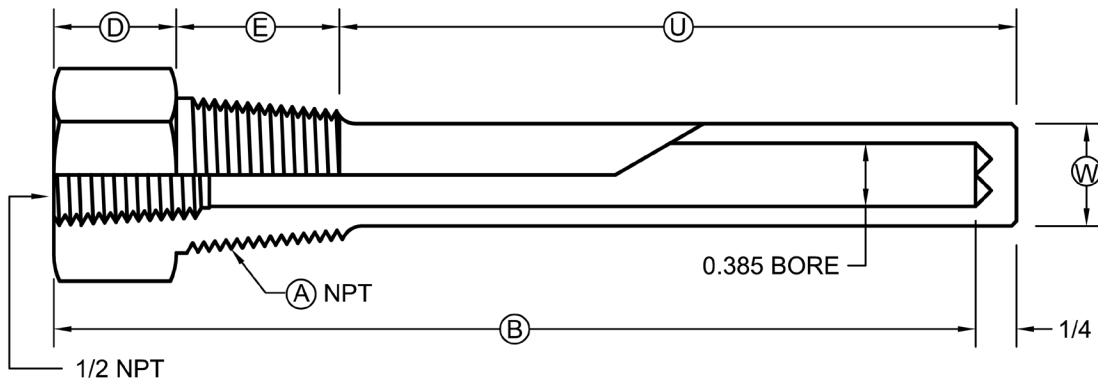
STRAIGHT SHANK .260" BORE



PART NO.	A	B	D	E	U	HEX
TW-1/2NPT-2.5S-1/4	1/2	2 1/2	1	5/8	1-1/8	1-1/8
TW-1/2NPT-4S-1/4	1/2	4	1	3/4	2-1/2	1-1/8
TW-3/4NPT-2.5S-1/4	3/4	2 1/2	5/16	13/16	1-5/8	1-1/8
TW-3/4NPT-4S-1/4	3/4	4	3/4	1	2-1/2	1-1/8
TW-1NPT-2.5S-1/4	1	2 1/2	5/16	13/16	1-5/8	1-3/8
TW-1NPT-4S-1/4	1	4	3/4	1	2-1/2	1-3/8

- Instrument element length including threads
- For 1/4" Diameter Elements
- B = Bore Depth

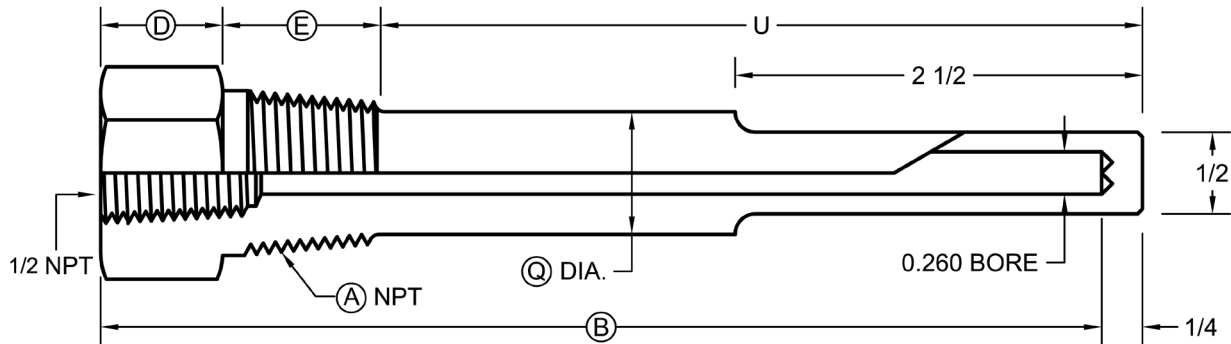
STRAIGHT SHANK .385" BORE



PART NO.	A	B	D	E	U	W	HEX
TW-1/2NPT-4S-3/8	1/2	4	1	3/4	2-1/2	5/8	1-1/8
TW-1/2NPT-6S-3/8	1/2	6	1	3/4	4-1/2	5/8	1-1/8
TW-1/2NPT-9S-3/8	1/2	9	1	3/4	7-1/2	5/8	1-1/8
TW-1/2NPT-12S-3/8	1/2	12	1	3/4	10-1/2	5/8	1-1/8
TW-3/4NPT-2.5S-3/8	3/4	2 1/2	5/16	13/16	1-5/8	.765	1-1/8
TW-3/4NPT-4S-3/8	3/4	4	3/4	1	2-1/2	49/64	1-1/8
TW-3/4NPT-6S-3/8	3/4	6	3/4	1	4-1/2	49/64	1-1/8
TW-3/4NPT-9S-3/8	3/4	9	3/4	1	7-1/2	49/64	1-1/8
TW-3/4NPT-12S-3/8	3/4	12	3/4	1	10-1/2	49/64	1-1/8
TW-3/4NPT-15S-3/8	3/4	15	3/4	1	13-1/2	49/64	1-1/8
TW-3/4NPT-18S-3/8	3/4	18	3/4	1	16-1/2	49/64	1-1/8
TW-3/4NPT-24S-3/8	3/4	24	3/4	1	22-1/2	49/64	1-1/8
TW-1NPT-2.5S-3/8	1	2 1/2	5/16	13/16	1-5/8	.765	1-3/8
TW-1NPT-4S-3/8	1	4	3/4	1	2-1/2	49/64	1-3/8
TW-1NPT-6S-3/8	1	6	3/4	1	4-1/2	49/64	1-3/8
TW-1NPT-9S-3/8	1	9	3/4	1	7-1/2	49/64	1-3/8
TW-1NPT-12S-3/8	1	12	3/4	1	10-1/2	49/64	1-3/8
TW-1NPT-15S-3/8	1	15	3/4	1	13-1/2	49/64	1-3/8
TW-1NPT-18S-3/8	1	18	3/4	1	16-1/2	49/64	1-3/8
TW-1NPT-24S-3/8	1	24	3/4	1	22-1/2	49/64	1-3/8

- Instrument element length including threads
- For 3/8" Diameter Elements
- B = Bore Depth

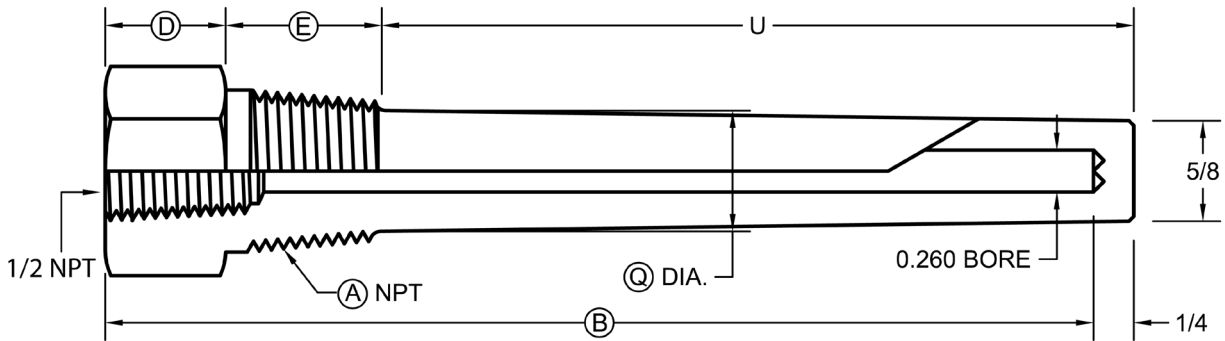
STEPPED SHANK .260" BORE



PART NO.	A	B	D	E	Q	U	HEX
TW-1/2NPT-6SS-1/4	1/2	6	1	3/4	5/8	4-1/2	1-1/8
TW-1/2NPT-9SS-1/4	1/2	9	1	3/4	5/8	7-1/2	1-1/8
TW-1/2NPT-12SS-1/4	1/2	12	1	3/4	5/8	10-1/2	1-1/8
TW-1/2NPT-15SS-1/4	1/2	15	1	3/4	5/8	13-1/2	1-1/8
TW-1/2NPT-18SS-1/4	1/2	18	1	3/4	5/8	16-1/2	1-1/8
TW-1/2NPT-24SS-1/4	1/2	24	1	3/4	5/8	22-1/2	1-1/8
TW-3/4NPT-6SS-1/4	3/4	6	3/4	1	3/4	4-1/2	1-1/8
TW-3/4NPT-9SS-1/4	3/4	9	3/4	1	3/4	7-1/2	1-1/8
TW-3/4NPT-12SS-1/4	3/4	12	3/4	1	3/4	10-1/2	1-1/8
TW-3/4NPT-15SS-1/4	3/4	15	3/4	1	3/4	13-1/2	1-1/8
TW-3/4NPT-18SS-1/4	3/4	18	3/4	1	3/4	16-1/2	1-1/8
TW-3/4NPT-24SS-1/4	3/4	24	3/4	1	3/4	22-1/2	1-1/8
TW-1NPT-6SS-1/4	1	6	3/4	1	7/8	4-1/2	1-3/8
TW-1NPT-9SS-1/4	1	9	3/4	1	7/8	7-1/2	1-3/8
TW-1NPT-12SS-1/4	1	12	3/4	1	7/8	10-1/2	1-3/8
TW-1NPT-15SS-1/4	1	15	3/4	1	7/8	13-1/2	1-3/8
TW-1NPT-18SS-1/4	1	18	3/4	1	7/8	16-1/2	1-3/8
TW-1NPT-24SS-1/4	1	24	3/4	1	7/8	22-1/2	1-3/8

- Instrument element length including threads
- For 1/4" Diameter Elements
- B = Bore Depth

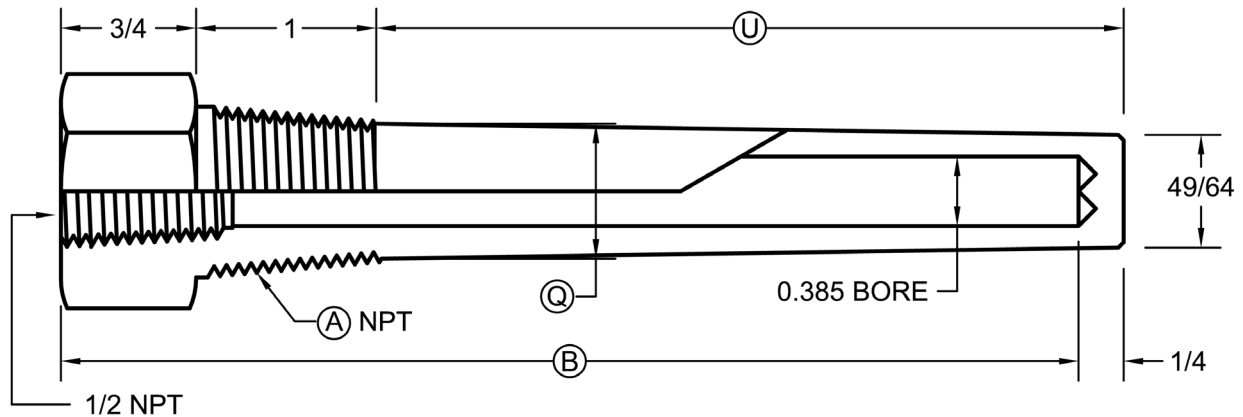
TAPER SHANK .260" BORE



PART NO.	A	B	D	E	Q	U	HEX
TW-1/2NPT-4T-1/4	1/2	4	1	3/4	5/8	2-1/2	1-1/8
TW-1/2NPT-6T-1/4	1/2	6	1	3/4	5/8	4-1/2	1-1/8
TW-1/2NPT-9T-1/4	1/2	9	1	3/4	5/8	7-1/2	1-1/8
TW-1/2NPT-12T-1/4	1/2	12	1	3/4	5/8	10-1/2	1-1/8
TW-1/2NPT-15T-1/4	1/2	15	1	3/4	5/8	13-1/2	1-1/8
TW-1/2NPT-18T-1/4	1/2	18	1	3/4	5/8	16-1/2	1-1/8
TW-1/2NPT-24T-1/4	1/2	24	1	3/4	5/8	22-1/2	1-1/8
TW-3/4NPT-4T-1/4	3/4	4	3/4	1	7/8	2-1/2	1-1/8
TW-3/4NPT-6T-1/4	3/4	6	3/4	1	7/8	4-1/2	1-1/8
TW-3/4NPT-9T-1/4	3/4	9	3/4	1	7/8	7-1/2	1-1/8
TW-3/4NPT-12T-1/4	3/4	12	3/4	1	7/8	10-1/2	1-1/8
TW-3/4NPT-15T-1/4	3/4	15	3/4	1	7/8	13 1/2	1-1/8
TW-3/4NPT-18T-1/4	3/4	18	3/4	1	7/8	16-1/2	1-1/8
TW-3/4NPT-24T-1/4	3/4	24	3/4	1	7/8	22-1/2	1-1/8
TW-1NPT-4T-1/4	1	4	3/4	1	1-1/16	2-1/2	1-1/8
TW-1NPT-6T-1/4	1	6	3/4	1	1-1/16	4-1/2	1-3/8
TW-1NPT-9T-1/4	1	9	3/4	1	1-1/16	7-1/2	1-3/8
TW-1NPT-12T-1/4	1	12	3/4	1	1-1/16	10-1/2	1-3/8
TW-1NPT-15T-1/4	1	15	3/4	1	1-1/16	13-1/2	1-3/8
TW-1NPT-18T-1/4	1	18	3/4	1	1-1/16	15-1/2	1-3/8
TW-1NPT-24T-1/4	1	24	3/4	1	1-1/16	22-1/2	1-3/8

- Instrument element length including threads
- For 1/4" Diameter Elements
- B = Bore Depth

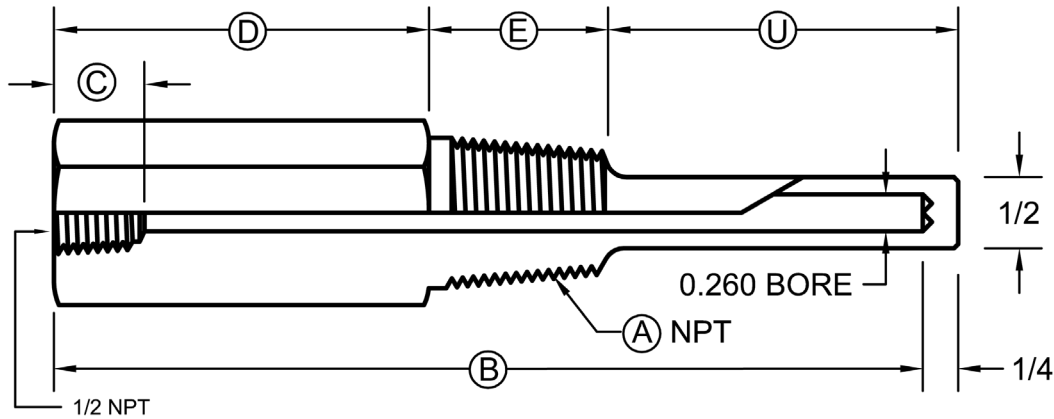
TAPER SHANK .385" BORE



PART NO.	A	B	U	Q	HEX
TW- $\frac{3}{4}$ NPT-4T-3/8	3/4	4	2½	7/8	1-1/8
TW- $\frac{3}{4}$ NPT-6T-3/8	3/4	6	4½	7/8	1-1/8
TW- $\frac{3}{4}$ NPT-9T-3/8	3/4	9	7½	7/8	1-1/8
TW- $\frac{3}{4}$ NPT-12T-3/8	3/4	12	10½	7/8	1-1/8
TW- $\frac{3}{4}$ NPT-15T-3/8	3/4	15	13½	7/8	1-1/8
TW- $\frac{3}{4}$ NPT-18T-3/8	3/4	18	16½	7/8	1-1/8
TW- $\frac{3}{4}$ NPT-24T-3/8	3/4	24	22½	7/8	1-1/8
TW-1NPT-4T-3/8	1	4	2½	1-1/16	1-3/8
TW-1NPT-6T-3/8	1	6	4½	1-1/16	1-3/8
TW-1NPT-9T-3/8	1	9	7½	1-1/16	1-3/8
TW-1NPT-12T-3/8	1	12	10½	1-1/16	1-3/8
TW-1NPT-15T-3/8	1	15	13½	1-1/16	1-3/8
TW-1NPT-18T-3/8	1	18	16½	1-1/16	1-3/8
TW-1NPT-24T-3/8	1	24	22½	1-1/16	1-3/8

- Instrument element length including threads
- For 3/8" Diameter Elements
- B = Bore Depth

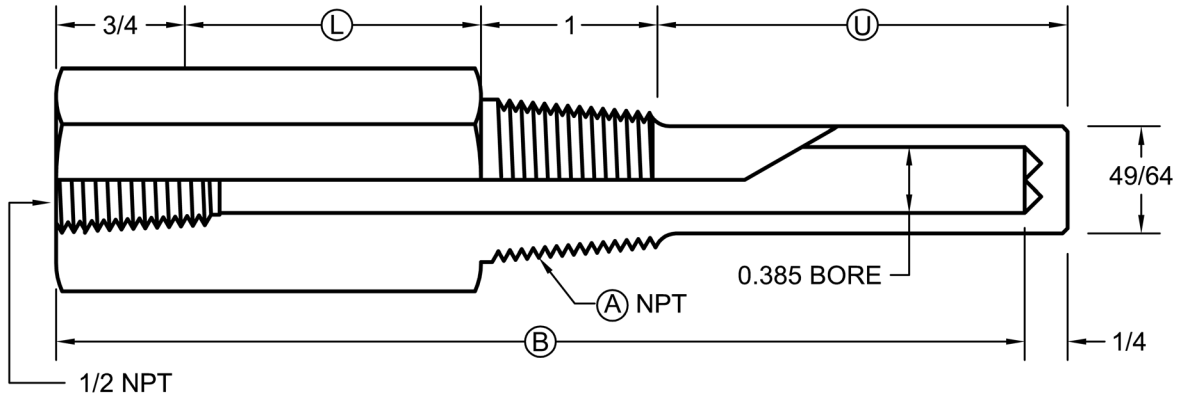
STRAIGHT SHANK .260" BORE LAGGING EXTENSION



PART NO.	A	B	C	D	E	U	HEX
TW-1/2NPT-4SL-1/4	1/2	4	1	1-7/8	3/4	1-5/8	1-1/8
TW-3/4NPT-4SL-1/4	3/4	4	1	1-5/8	1	1-5/8	1-1/8
TW-1NPT-4SL-1/4	1	4	1	1-5/8	1	1-5/8	1-3/8
TW-1/2NPT-6SL-1/4	1/2	6	3/4	2-3/4	1	2-1/2	1-1/8
TW-3/4NPT-6SL-1/4	3/4	6	3/4	2-3/4	1	2-1/2	1-1/8
TW-1NPT-6SL-1/4	1	6	3/4	2-3/4	1	2-1/2	1-3/8

- Instrument element length including threads
- For 1/4" Diameter Elements
- B = Bore Depth

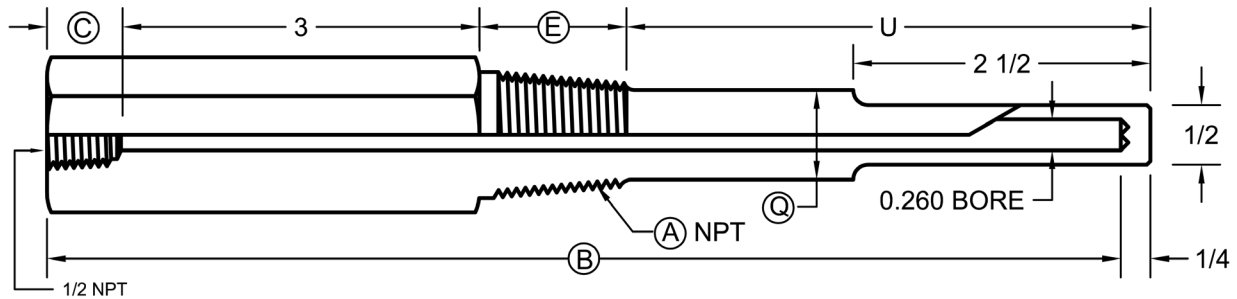
STRAIGHT SHANK .385" BORE LAGGING EXTENSION



PART NO.	A	B	L	U	HEX
TW-3/4NPT-4SL-3/8	3/4	4	7/8	1-5/8	1-1/8
TW-3/4NPT-6SL-3/8	3/4	6	2	2 1/2	1-1/8
TW-3/4NPT-9SL-3/8	3/4	9	3	4 1/2	1-1/8
TW-3/4NPT-12SL-3/8	3/4	12	3	7 1/2	1-1/8
TW-3/4NPT-15SL-3/8	3/4	15	3	10 1/2	1-1/8
TW-3/4NPT-18SL-3/8	3/4	18	3	13 1/2	1-1/8
TW-3/4NPT-24sL-3/8	3/4	24	3	19 1/2	1-1/8
TW-1NPT-4SL-3/8	1	4	7/8	1-5/8	1-3/8
TW-1NPT-6SL-3/8	1	6	2	2 1/2	1-3/8
TW-1NPT-9SL-3/8	1	9	3	4 1/2	1-3/8
TW-1NPT-12SL-3/8	1	12	3	7 1/2	1-3/8
TW-1NPT-15SL-3/8	1	15	3	10 1/2	1-3/8
TW-1NPT-18SL-3/8	1	18	3	13 1/2	1-3/8
TW-1NPT-24SL-3/8	1	24	3	19 1/2	1-3/8

- Instrument element length including threads
- For 3/8" Diameter Elements
- B = Bore Depth

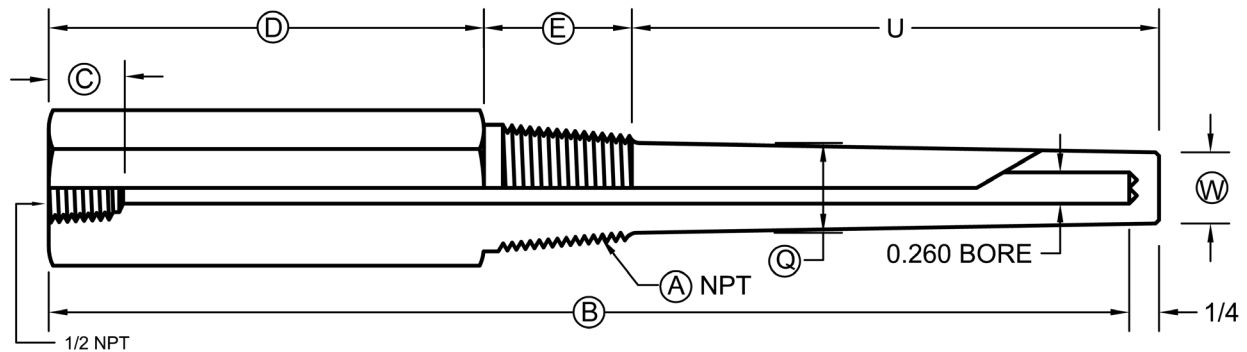
STEPPED SHANK .260" BORE LAGGING EXTENSION



PART NO.	A	B	D	E	Q	U	HEX
TW-1/2NPT-9SSL-1/4	1/2	9	1	3/4	5/8	4-1/2	1-1/8
TW-1/2NPT-12SSL-1/4	1/2	12	1	3/4	5/8	7-1/2	1-1/8
TW-1/2NPT-15SSL-1/4	1/2	15	1	3/4	5/8	10-1/2	1-1/8
TW-1/2NPT-18SSL-1/4	1/2	18	1	3/4	5/8	13-1/2	1-1/8
TW-1/2NPT-24SSL-1/4	1/2	24	1	3/4	5/8	19-1/2	1-1/8
TW-3/4NPT-9SSL-1/4	3/4	9	3/4	1	3/4	4-1/2	1-1/8
TW-3/4NPT-12SSL-1/4	3/4	12	3/4	1	3/4	7-1/2	1-1/8
TW-3/4NPT-15SSL-1/4	3/4	15	3/4	1	3/4	10-1/2	1-1/8
TW-3/4NPT-18SSL-1/4	3/4	18	3/4	1	3/4	13-1/2	1-1/8
TW-3/4NPT-24SSL-1/4	3/4	24	3/4	1	3/4	19-1/2	1-1/8
TW-1NPT-9SSL-1/4	1	9	3/4	1	7/8	4-1/2	1-3/8
TW-1NPT-12SSL-1/4	1	12	3/4	1	7/8	7-1/2	1-3/8
TW-1NPT-15SSL-1/4	1	15	3/4	1	7/8	10-1/2	1-3/8
TW-1NPT-18SSL-1/4	1	18	3/4	1	7/8	13-1/2	1-3/8
TW-1NPT-24SSL-1/4	1	24	3/4	1	7/8	19-1/2	1-3/8

- Instrument element length including threads
- For 1/4" Diameter Elements
- B = Bore Depth

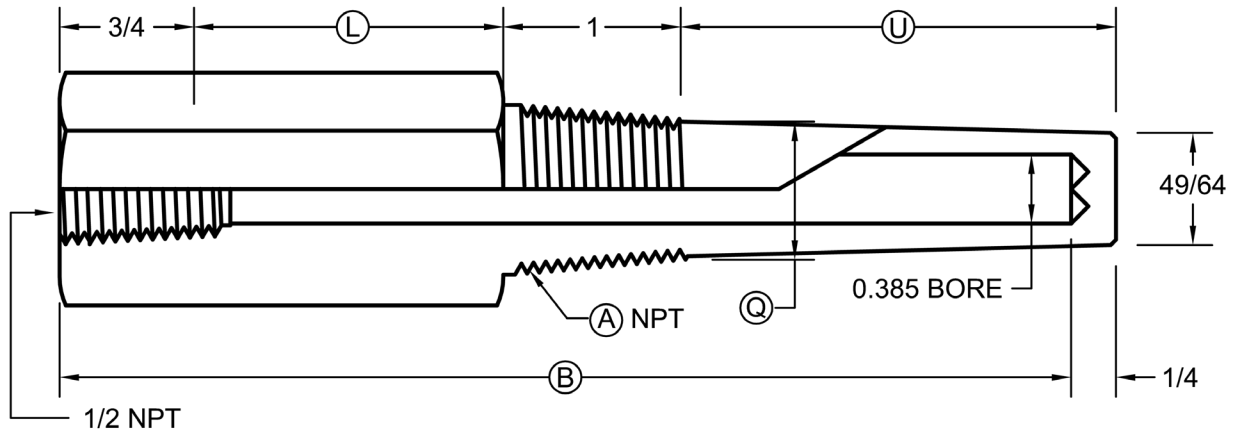
TAPER SHANK .260" BORE LAGGING EXTENSION



PART NO.	A	B	C	D	E	Q	W	U	HEX
TW-1/2NPT-6TL-1/4	1/2	6	1	3	3/4	5/8	1/2	2-1/2	1-1/8
TW-1/2NPT-9TL-1/4	1/2	9	1	4	3/4	5/8	1/2	4-1/2	1-1/8
TW-1/2NPT-12TL-1/4	1/2	12	1	4	3/4	5/8	1/2	7-1/2	1-1/8
TW-1/2NPT-15TL-1/4	1/2	15	1	4	3/4	5/8	1/2	10-1/2	1-1/8
TW-1/2NPT-18TL-1/4	1/2	18	1	4	3/4	5/8	1/2	13-1/2	1-1/8
TW-1/2NPT-24TL-1/4	1/2	24	1	4	3/4	5/8	1/2	19-1/2	1-1/8
TW-3/4NPT-6TL-1/4	3/4	6	3/4	2-3/4	1	7/8	5/8	2-1/2	1-1/8
TW-3/4NPT-9TL-1/4	3/4	9	3/4	3-3/4	1	7/8	5/8	4-1/2	1-1/8
TW-3/4NPT-12TL-1/4	3/4	12	3/4	3-3/4	1	7/8	5/8	7-1/2	1-1/8
TW-3/4NPT-15TL-1/4	3/4	15	3/4	3-3/4	1	7/8	5/8	10-1/2	1-1/8
TW-3/4NPT-18TL-1/4	3/4	18	3/4	3-3/4	1	7/8	5/8	13-1/2	1-1/8
TW-3/4NPT-24TL-1/4	3/4	24	3/4	3-3/4	1	7/8	5/8	19-1/2	1-1/8
TW-1NPT-6TL-1/4	1	6	3/4	2-3/4	1	1-1/16	5/8	2-1/2	1-3/8
TW-1NPT-9TL-1/4	1	9	3/4	3-3/4	1	1-1/16	5/8	4-1/2	1-3/8
TW-1NPT-12TL-1/4	1	12	3/4	3-3/4	1	1-1/16	5/8	7-1/2	1-3/8
TW-1NPT-15TL-1/4	1	15	3/4	3-3/4	1	1-1/16	5/8	10-1/2	1-3/8
TW-1NPT-18TL-1/4	1	18	3/4	3-3/4	1	1-1/16	5/8	13-1/2	1-3/8
TW-1NPT-24TL-1/4	1	24	3/4	3-3/4	1	1-1/16	5/8	19-1/2	1-3/8

- Instrument element length including threads
- For 1/4" Diameter Elements
- B = Bore Depth

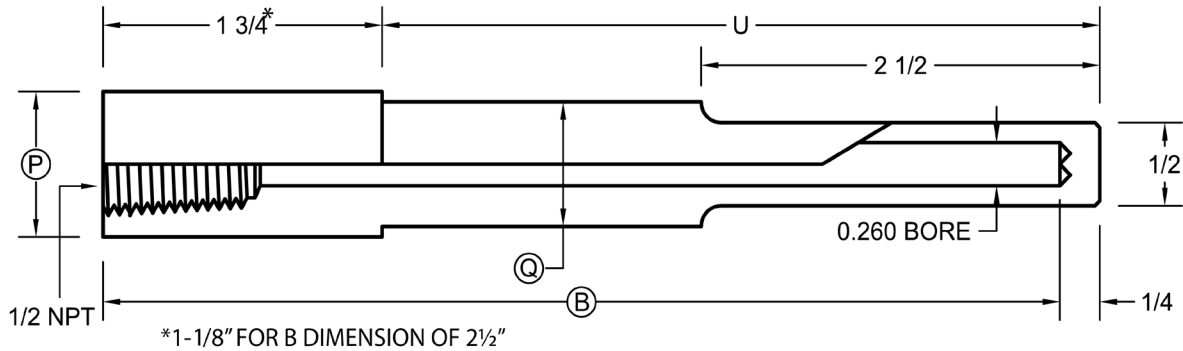
TAPER SHANK .385" BORE LAGGING EXTENSION



PART NO.	A	B	L	U	Q	HEX
TW-3/4NPT-6TL-3/8	3/4	6	2	2½	7/8	1-1/8
TW-3/4NPT-9TL-3/8	3/4	9	3	4½	7/8	1-1/8
TW-3/4NPT-12TL-3/8	3/4	12	3	7½	7/8	1-1/8
TW-3/4NPT-15TL-3/8	3/4	15	3	10½	7/8	1-1/8
TW-3/4NPT-18TL-3/8	3/4	18	3	13½	7/8	1-1/8
TW-3/4NPT-24TL-3/8	3/4	24	3	19½	7/8	1-1/8
TW-1NPT-6TL-3/8	1	6	2	2½	1-1/16	1-3/8
TW-1NPT-9TL-3/8	1	9	3	4½	1-1/16	1-3/8
TW-1NPT-12TL-3/8	1	12	3	7½	1-1/16	1-3/8
TW-1NPT-15TL-3/8	1	15	3	10½	1-1/16	1-3/8
TW-1NPT-18TL-3/8	1	18	3	13½	1-1/16	1-3/8
TW-1NPT-24TL-3/8	1	24	3	19½	1-1/16	1-3/8

- Instrument element length including threads
- For 3/8" Diameter Elements
- B = Bore Depth

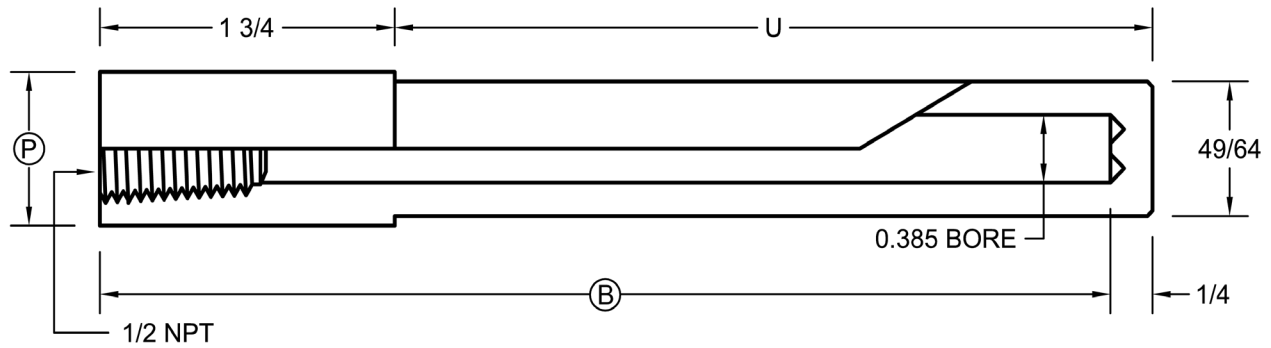
SOCKET WELD STEPPED SHANK .260" BORE



P	PART NO.	Q	P	B	P	PART NO.	Q	P	B
3/4 NOMINAL (1.050 DIA)	TW-3/4SW-2.5SS-1/4	1/2	1.050	2 1/2	1 NOMINAL (1.315 DIA)	TW-1SW-2.5SS-1/4	1/2	1.315	2 1/2
	TW-3/4SW-4SS-1/4	3/4	1.050	4		TW-1SW-4SS-1/4	7/8	1.315	4
	TW-3/4SW-6SS-1/4	3/4	1.050	6		TW-1SW-6SS-1/4	7/8	1.315	6
	TW-3/4SW-9SS-1/4	3/4	1.050	9		TW-1SW-9SS-1/4	7/8	1.315	9
	TW-3/4SW-12SS-1/4	3/4	1.050	12		TW-1SW-12SS-1/4	7/8	1.315	12
	TW-3/4SW-15SS-1/4	3/4	1.050	15		TW-1SW-15SS-1/4	7/8	1.315	15
	TW-3/4SW-18SS-1/4	3/4	1.050	18		TW-1SW-18SS-1/4	7/8	1.315	18
	TW-3/4SW-24SS-1/4	3/4	1.050	24		TW-1SW-24SS-1/4	7/8	1.315	24

- Instrument element length including threads
- For 1/4" Diameter Elements
- B = Bore Depth

SOCKET WELD STRAIGHT SHANK .385" BORE

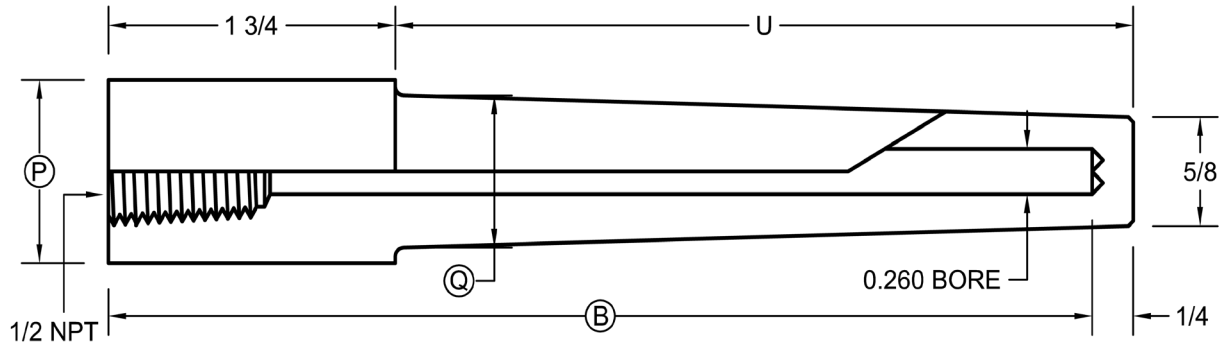


P	PART NO.	Q	P
PIPE SIZE	TW-3/4SW-4S-3/8	1.050	4
	TW-3/4SW-6S-3/8	1.050	6
3/4 NOMINAL (1.050 DIA)	TW-3/4SW-9S-3/8	1.050	9
	TW-3/4SW-12S-3/8	1.050	12
	TW-3/4SW-15S-3/8	1.050	15
	TW-3/4SW-18S-3/8	1.050	18
	TW-3/4SW-24S-3/8	1.050	24

P	PART NO.	Q	P
PIPE SIZE	TW-1SW-4S-3/8	1.315	4
	TW-1SW-6S-3/8	1.315	6
1 NOMINAL (1.315 DIA)	TW-1SW-9S-3/8	1.315	9
	TW-1SW-12S-3/8	1.315	12
	TW-1SW-15S-3/8	1.315	15
	TW-1SW-18S-3/8	1.315	18
	TW-1SW-24S-3/8	1.315	24

- Instrument element length including threads
- For 3/8" Diameter Elements
- B = Bore Depth

SOCKET WELD TAPER SHANK .260" BORE

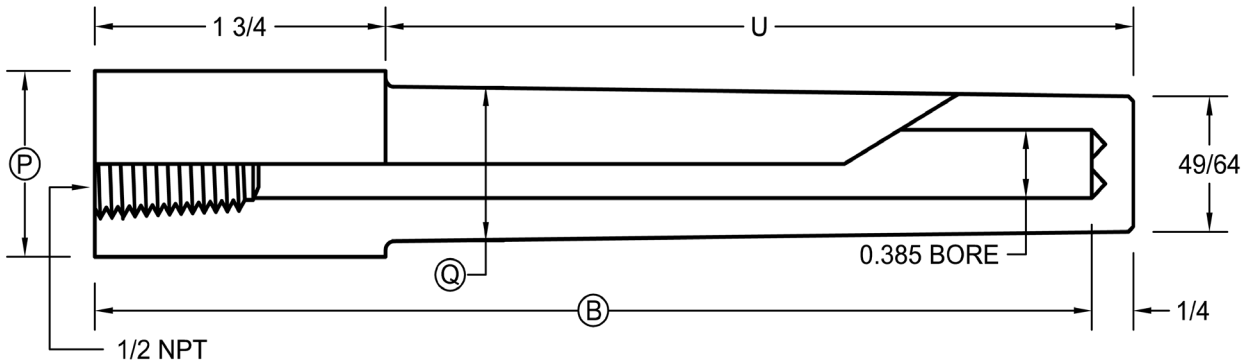


P	PART NO.	Q	P	B
PIPE SIZE	TW-3/4SW-4T-1/4	7/8	1.050	4
	TW-3/4SW-6T-1/4	7/8	1.050	6
3/4 NOMINAL (1.050 DIA)	TW-3/4SW-9T-1/4	7/8	1.050	9
	TW-3/4SW-12T-1/4	7/8	1.050	12
	TW-3/4SW-15T-1/4	7/8	1.050	15
	TW-3/4SW-18T-1/4	7/8	1.050	18
	TW-3/4SW-24T-1/4	7/8	1.050	24

P	PART NO.	Q	P	B
PIPE SIZE	TW-1SW-4T-1/4	1-1/16	1.315	4
	TW-1SW-6T-1/4	1-1/16	1.315	6
1 NOMINAL (1.315 DIA)	TW-1SW-9T-1/4	1-1/16	1.315	9
	TW-1SW-12T-1/4	1-1/16	1.315	12
	TW-1SW-15T-1/4	1-1/16	1.315	15
	TW-1SW-18T-1/4	1-1/16	1.315	18
	TW-1SW-24T-1/4	1-1/16	1.315	24

- Instrument element length including threads
- For 1/4" Diameter Elements
- B = Bore Depth

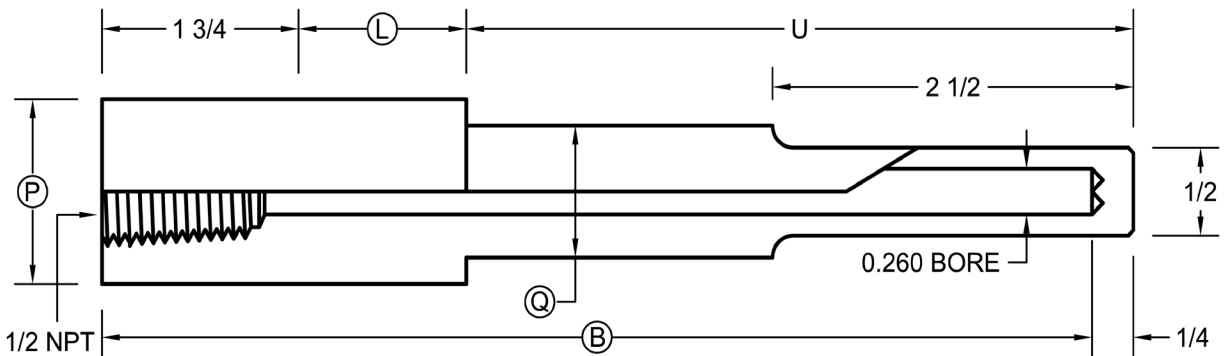
SOCKET WELD TAPER SHANK .385" BORE



P	PART NO.	Q	P	B	P	PART NO.	Q	P	B
3/4 NOMINAL (1.050 DIA)	TW-3/4SW-4T-3/8	7/8	1.050	4	1 NOMINAL (1.315 DIA)	TW-1SW-4T-3/8	1-1/16	1.315	4
	TW-3/4SW-6T-3/8	7/8	1.050	6		TW-1SW-6T-3/8	1-1/16	1.315	6
	TW-3/4SW-9T-3/8	7/8	1.050	9		TW-1SW-9T-3/8	1-1/16	1.315	9
	TW-3/4SW-12T-3/8	7/8	1.050	12		TW-1SW-12T-3/8	1-1/16	1.315	12
	TW-3/4SW-15T-3/8	7/8	1.050	15		TW-1SW-15T-3/8	1-1/16	1.315	15
	TW-3/4SW-18T-3/8	7/8	1.050	18		TW-1SW-18T-3/8	1-1/16	1.315	18
	TW-3/4SW-24T-3/8	7/8	1.050	24		TW-1SW-24T-3/8	1-1/16	1.315	24

- Instrument element length including threads
- For 3/8" Diameter Elements
- B = Bore Depth

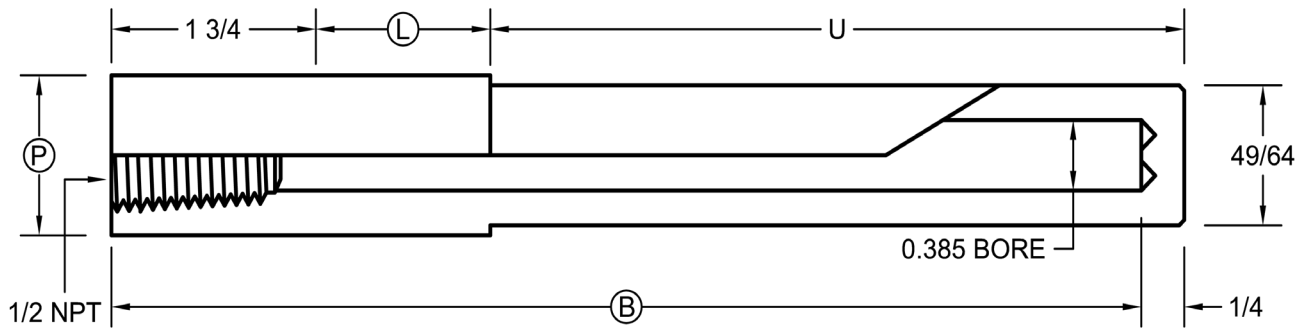
SOCKET WELD STEPPED SHANK .260" BORE LAGGING EXTENSION



P	PART NO.	B	L	Q	P	PART NO.	B	L	Q
3/4 NOMINAL (1.050 DIA)	TW-3/4SW-6SSL-1/4	6	2	3/4	1 NOMINAL (1.315 DIA)	TW-1SW-6SSL-1/4	6	2	7/8
	TW-3/4SW-9SSL-1/4	9	3	3/4		TW-1SW-9SSL-1/4	9	3	7/8
	TW-3/4SW-12SSL-1/4	12	3	3/4		TW-1SW-12SSL-1/4	12	3	7/8
	TW-3/4SW-15SSL-1/4	15	3	3/4		TW-1SW-15SSL-1/4	15	3	7/8
	TW-3/4SW-18SSL-1/4	18	3	3/4		TW-1SW-18SSL-1/4	18	3	7/8
	TW-3/4SW-24SSL-1/4	24	3	3/4		TW-1SW-24SSL-1/4	24	3	7/8

- Instrument element length including threads
- For 1/4" Diameter Elements
- B = Bore Depth

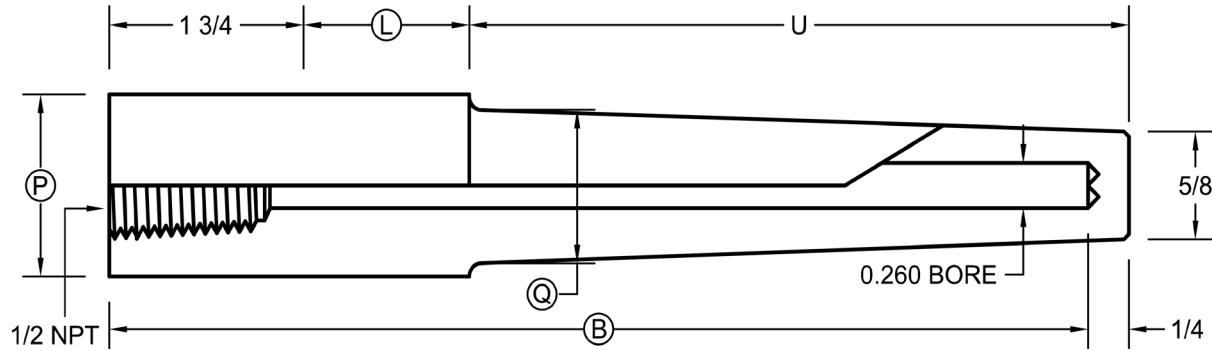
SOCKET WELD STRAIGHT SHANK .385" BORE LAGGING EXTENSION



P	PART NO.	B	L	P	PART NO.	B	L
3/4 NOMINAL (1.050 DIA)	TW-3/4SW-6SL-3/8	6	2	1 NOMINAL (1.315 DIA)	TW-1SW-6SL-3/8	6	2
	TW-3/4SW-9SL-3/8	9	3		TW-1SW-9SL-3/8	9	3
	TW-3/4SW-12SL-3/8	12	3		TW-1SW-12SL-3/8	12	3
	TW-3/4SW-15SL-3/8	15	3		TW-1SW-15SL-3/8	15	3
	TW-3/4SW-18SL-3/8	18	3		TW-1SW-18SL-3/8	18	3
	TW-3/4SW-24SL-3/8	24	3		TW-1SW-24SL-3/8	24	3

- Instrument element length including threads
- For 3/8" Diameter Elements
- B = Bore Depth

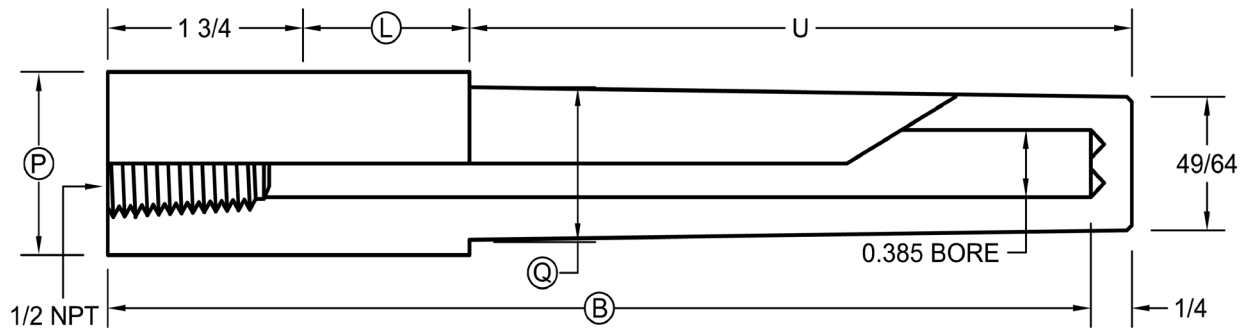
SOCKET WELD TAPER SHANK .260" BORE LAGGING EXTENSION



P	PART NO.	B	L	Q	P	PART NO.	B	L	Q
3/4 NOMINAL (1.050 DIA)	TW-3/4SW-6TL-1/4	6	2	7/8	1 NOMINAL (1.315 DIA)	TW-1SW-6TL-1/4	6	2	1-1/16
	TW-3/4SW-9TL-1/4	9	3	7/8		TW-1SW-9TL-1/4	9	3	1-1/16
	TW-3/4SW-12TL-1/4	12	3	7/8		TW-1SW-12TL-1/4	12	3	1-1/16
	TW-3/4SW-15TL-1/4	15	3	7/8		TW-1SW-15TL-1/4	15	3	1-1/16
	TW-3/4SW-18TL-1/4	18	3	7/8		TW-1SW-18TL-1/4	18	3	1-1/16
	TW-3/4SW-24TL-1/4	24	3	7/8		TW-1SW-24TL-1/4	24	3	1-1/16

- Instrument element length including threads
- For 1/4" Diameter Elements
- B = Bore Depth

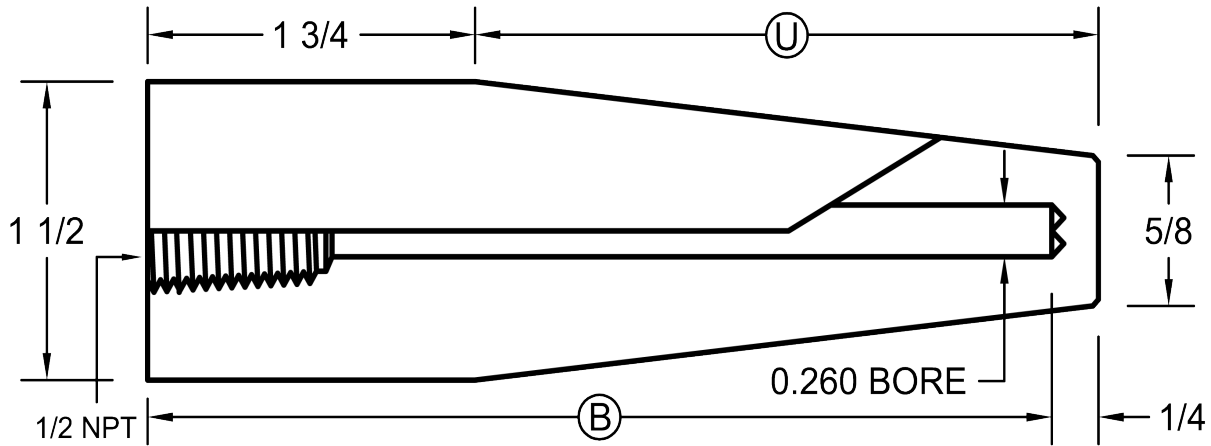
SOCKET WELD TAPER SHANK .385" BORE LAGGING EXTENSION



P	PART NO.	B	L	Q	P	PART NO.	B	L	Q
3/4 NOMINAL (1.050 DIA)	TW-3/4SW-6TL-3/8	6	2	7/8	1 NOMINAL (1.315 DIA)	TW-1SW-6TL-3/8	6	2	1-1/16
	TW-3/4SW-9TL-3/8	9	3	7/8		TW-1SW-9TL-3/8	9	3	1-1/16
	TW-3/4SW-12TL-3/8	12	3	7/8		TW-1SW-12TL-3/8	12	3	1-1/16
	TW-3/4SW-15TL-3/8	15	3	7/8		TW-1SW-15TL-3/8	15	3	1-1/16
	TW-3/4SW-18TL-3/8	18	3	7/8		TW-1SW-18TL-3/8	18	3	1-1/16
	TW-3/4SW-24TL-3/8	24	3	7/8		TW-1SW-24TL-3/8	24	3	1-1/16

- Instrument element length including threads
- For 3/8" Diameter Elements
- B = Bore Depth

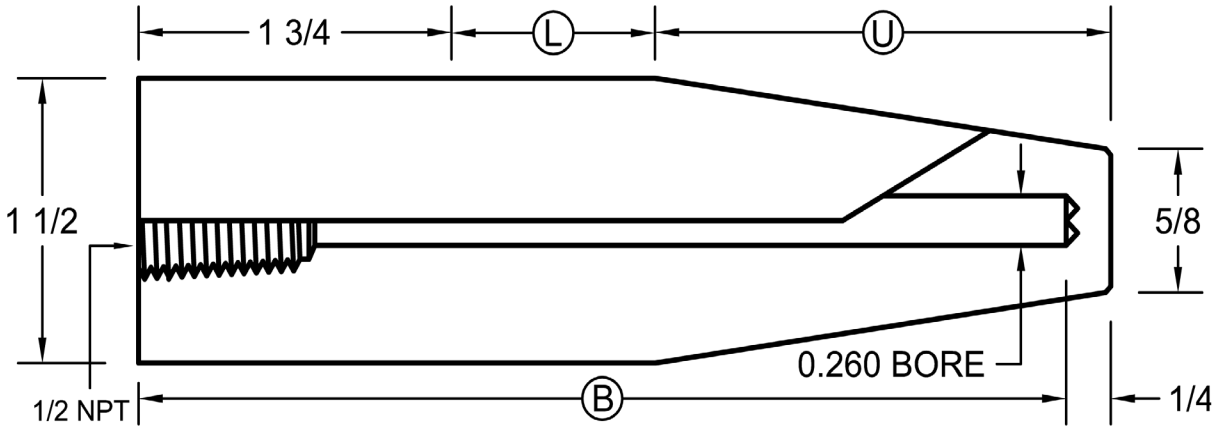
WELD-IN .260" BORE



PART NO.	B	U
TW-1.5WI-4-1/4	4	2½
TW-1.5WI-6-1/4	6	4½
TW-1.5WI-9-1/4	9	7½
TW-1.5WI-12-1/4	12	10½
TW-1.5WI-15-1/4	15	13½
TW-1.5WI-18-1/4	18	16½
TW-1.5WI-24-1/4	24	22½

- Instrument element length including threads
- For 1/4" Diameter Elements
- B = Bore Depth

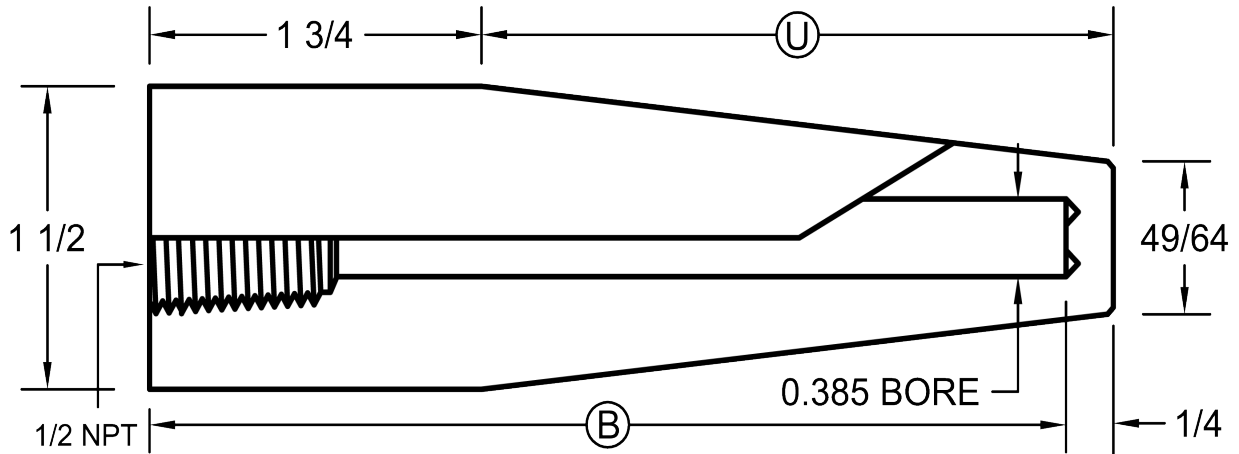
WELD-IN .260" BORE LAGGING EXTENSION



PART NO.	B	L	U
TW-1.5WI-6L-1/4	6	2	2½
TW-1.5WI-9L-1/4	9	3	4½
TW-1.5WI-12L-1/4	12	3	7½
TW-1.5WI-15L-1/4	15	3	10½
TW-1.5WI-18L-1/4	18	3	13½
TW-1.5WI-24L-1/4	24	3	19½

- Instrument element length including threads
- For 1/4" Diameter Elements
- B = Bore Depth

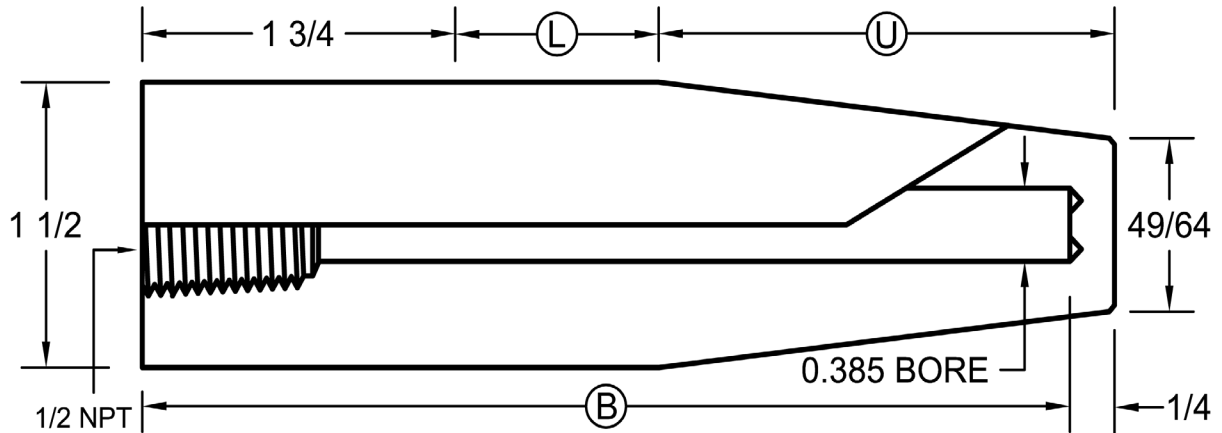
WELD-IN .385" BORE



PART NO.	B	U
TW-1.5WI-4-3/8	4	2½
TW-1.5WI-6-3/8	6	4½
TW-1.5WI-9-3/8	9	7½
TW-1.5WI-12-3/8	12	10½
TW-1.5WI-15-3/8	15	13½
TW-1.5WI-18-3/8	18	16½
TW-1.5WI-24-3/8	24	22½

- Instrument element length including threads
- For 3/8" Diameter Elements
- B = Bore Depth

WELD-IN .385" BORE LAGGING EXTENSION

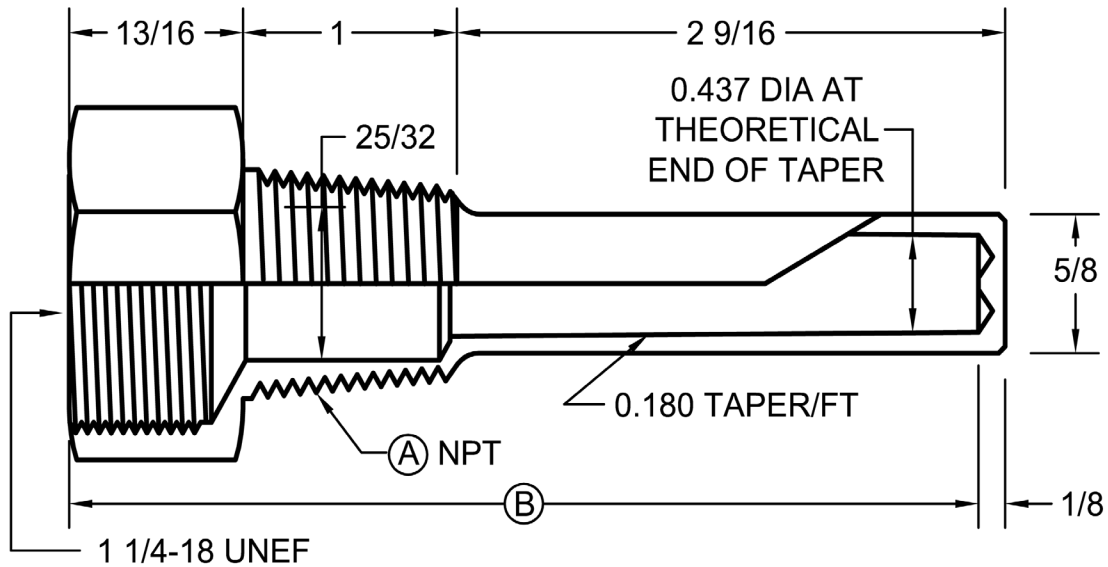


PART NO.	B	L	U
TW-1.5WI-6L-3/8	6	2	2½
TW-1.5WI-9L-3/8	9	3	4½
TW-1.5WI-12L-3/8	12	3	7½
TW-1.5WI-15L-3/8	15	3	10½
TW-1.5WI-18L-3/8	18	3	13½
TW-1.5WI-24L-3/8	24	3	19½

- Instrument element length including threads
- For 3/8" Diameter Elements
- B = Bore Depth

THERMOWELLS FOR INDUSTRIAL THERMOMETERS

STRAIGHT SHANK

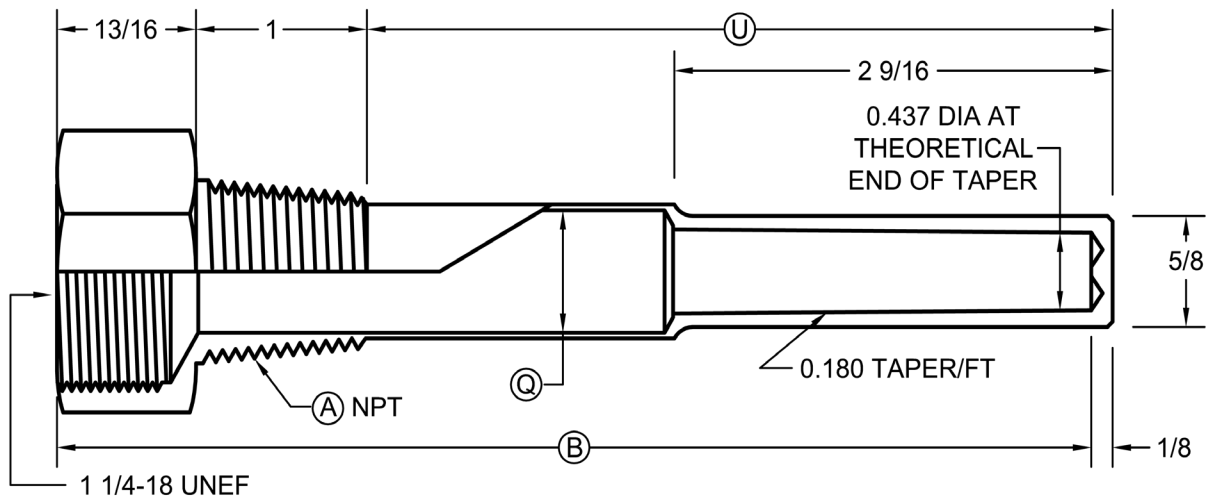


PART NO.	A	B	U	HEX
TW-3/4PW-4.5S	3/4	4 1/2	2-9/16	1-3/8
TW-1PW-4.5S	1	4 1/2	2-9/16	1-3/8

■ B = Bore Depth

THERMOWELLS FOR INDUSTRIAL THERMOMETERS

STEPPED SHANK



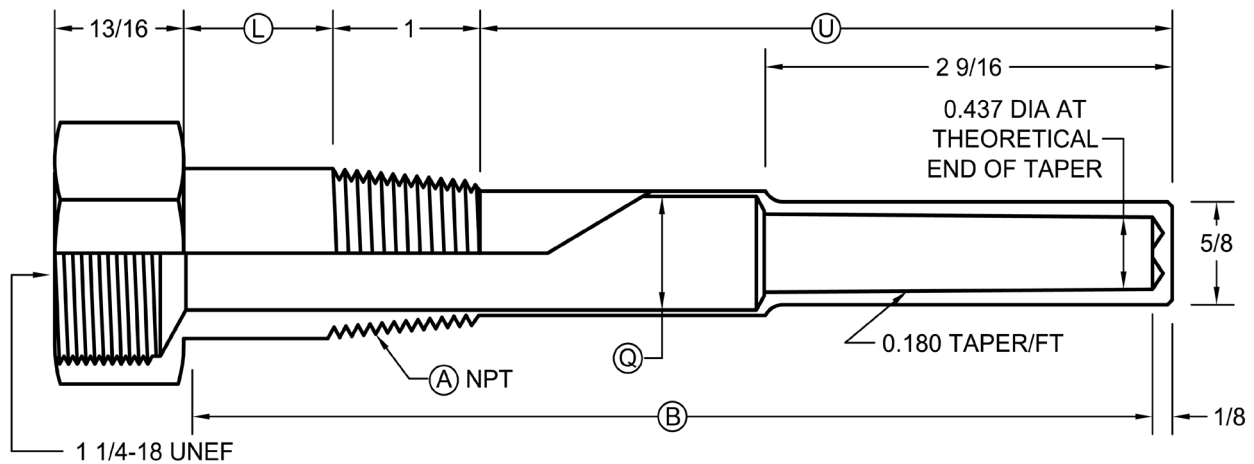
PART NO.	T	A	B	U	Q	HEX
TW-3/4PW-6SS	6	3/4	6-25/32	5-1/16	7/8	1-3/8
TW-3/4PW-8SS	8	3/4	8-25/32	7-1/16	7/8	1-3/8
TW-3/4PW-12SS	12	3/4	12-25/32	11-1/16	7/8	1-3/8
TW-1PW-6SS	6	1	6-25/32	5-1/16	1-1/16	1-3/8
TW-1PW-8SS	8	1	8-25/32	7-1/16	1-1/16	1-3/8
TW-1PW-12SS	12	1	12-25/32	11-1/16	1-1/16	1-3/8

T = Nominal Bulb Length

■ B = Bore Depth

THERMOWELLS FOR INDUSTRIAL THERMOMETERS

STEPPED SHANK LAGGING EXTENSION



PART NO.	T	A	B	L	U	Q	HEX
TW-3/4PW-6SSL	6	3/4	6-25/32	2-5/8	2-9/16	7/8	1-3/8
TW-3/4PW-8SSL	8	3/4	8-25/32	4-5/8	2-9/16	7/8	1-3/8
TW-3/4PW-8SSEL	8	3/4	8-25/32	2-5/8	4-9/16	7/8	1-3/8
TW-1PW-6SSL	6	1	6-25/32	2-5/8	2-9/16	1-1/16	1-3/8
TW-1PW-8SSL	8	1	8-25/32	4-5/8	2-9/16	1-1/16	1-3/8
TW-1PW-8SSEL	8	1	8-25/32	2-5/8	4-9/16	1-1/16	1-3/8
TW-1PW-12SS	12	1	12-25/32	2-5/8	8-9/16	1-1/16	1-3/8

T = Nominal Bulb Length

■ B = Bore Depth