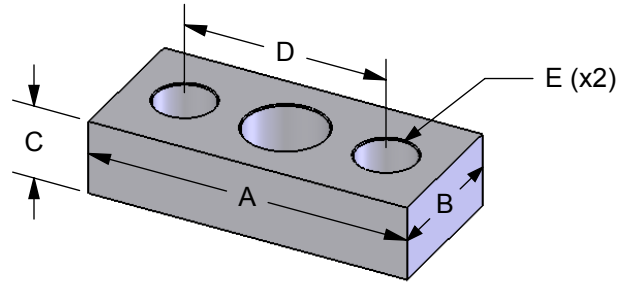
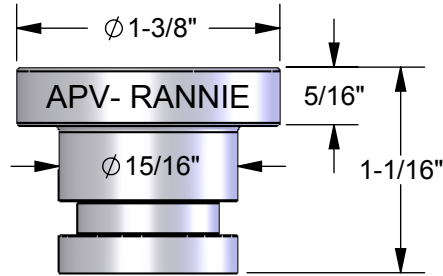
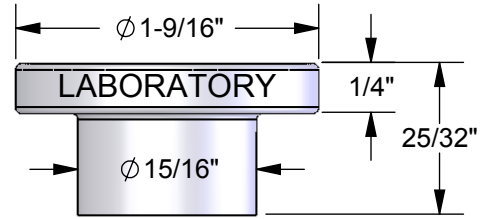
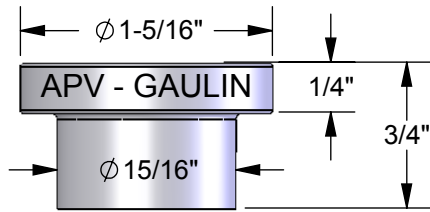
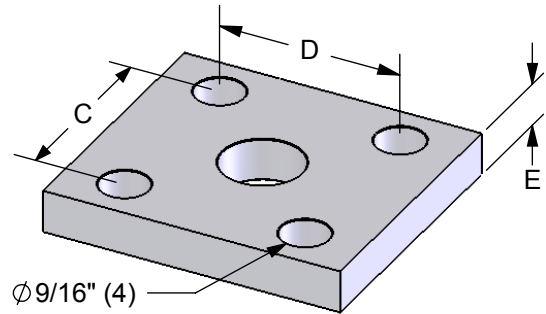
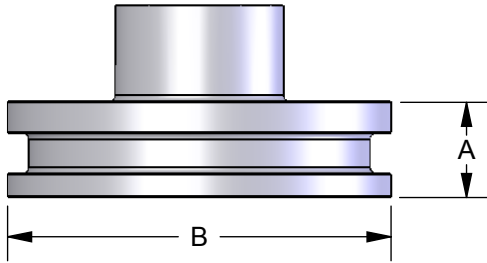


APV



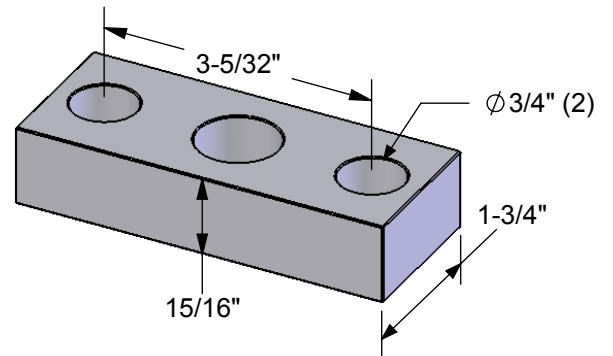
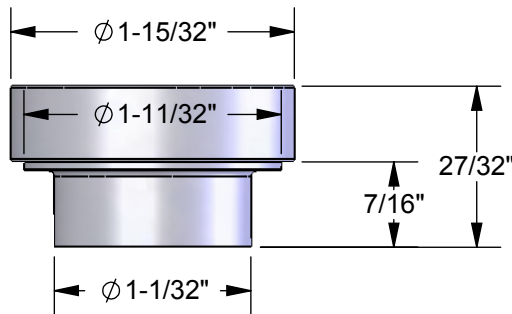
	A	B	C	D	E
APV - GAULIN / RANNIE	3-3/4"	1-11/16"	7/8" or 1-1/8"	2-3/8"	11/16"
LABORATORY	4-17/32"	1-25/32"	1-21/32"	2-31/32"	7/8"

WAUKESHA-SPX



	A	B	C	D	E
SMALL	1/2"	1-1/4"	2-1/8"	2-1/8"	1/2"
LARGE	1/2"	2"	2-1/2"	4-1/4"	3/4"

NIRO-SOAVI



ALL DIMENSIONS ARE APPROXIMATE - FOR IDENTIFICATION PURPOSES ONLY

REVISIONS			UNLESS OTHERWISE NOTED: DIMENSIONS ARE IN INCHES TOLERANCES: $\pm .003''$ FRACTIONAL: $\pm 1/64''$ RADIAL: $\pm .001''$ ANGULAR: $1/4^\circ$ REMOVE ALL BURRS	NAME	DATE	CHICAGO STAINLESS EQUIPMENT	
REV.	DATE	DESCRIPTION		BY	APPROVED	SANI-FLOW HOMOGENIZER PRESSURE GAUGE FITTINGS AND FLANGES	
<p>PROPRIETARY AND CONFIDENTIAL</p> <p>THE INFORMATION CONTAINED IN THIS DRAWING IS THE SOLE PROPERTY OF CHICAGO STAINLESS EQUIPMENT. ANY REPRODUCTION IN PART OR AS A WHOLE WITHOUT THE WRITTEN PERMISSION OF CHICAGO STAINLESS EQUIPMENT IS PROHIBITED.</p>			MATERIAL	COMMENTS:		SIZE	DWG. NO.
			FINISH			A	REV.
			DO NOT SCALE DRAWING			SCALE: 1:1	WEIGHT:
						SHEET 1 OF 1	