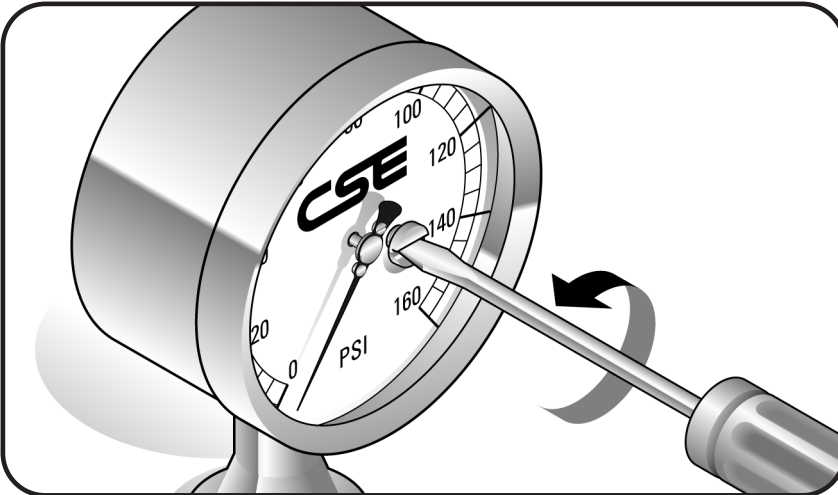


CSE™ Chicago Stainless Equipment

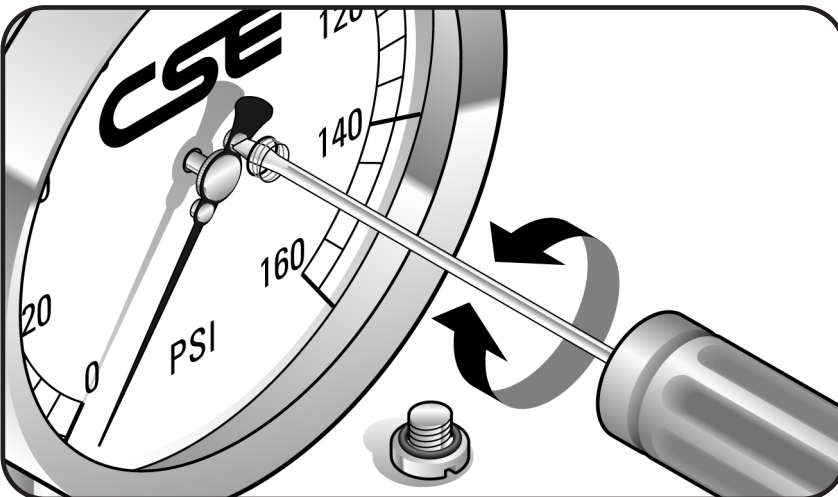
Sanitary Pressure Gauges Re-Zeroing Procedure

If upon receipt of this gauge the pointer is not indicating Zero, (generally caused by changes in temperature, elevation or barometric pressure) simply follow these directions:



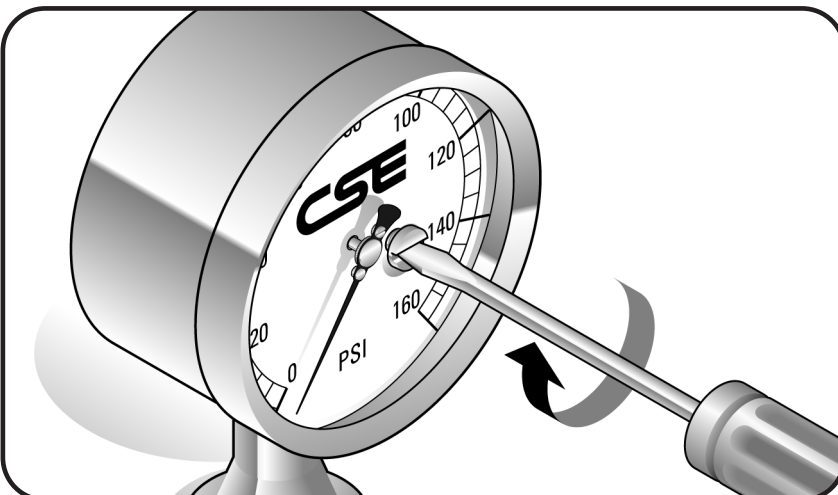
STEP 1

Remove the screw in the lens using a large flat bladed screwdriver. *Please Note: A drop or two of liquid may drip out.*



STEP 2

Insert a *small* bladed screwdriver into the hole in the lens. **Correct** the pointer position by adjusting the screw on the pointer. If the screw can not be reached, temporarily remove the lens to allow access. Then reassemble gauge.



STEP 3

Replace screw in lens using a large bladed screwdriver. *Please Note: If recalibration is necessary, it is recommended that the gauge be returned to the factory where it will be completely rebuilt and calibrated to original specifications.*